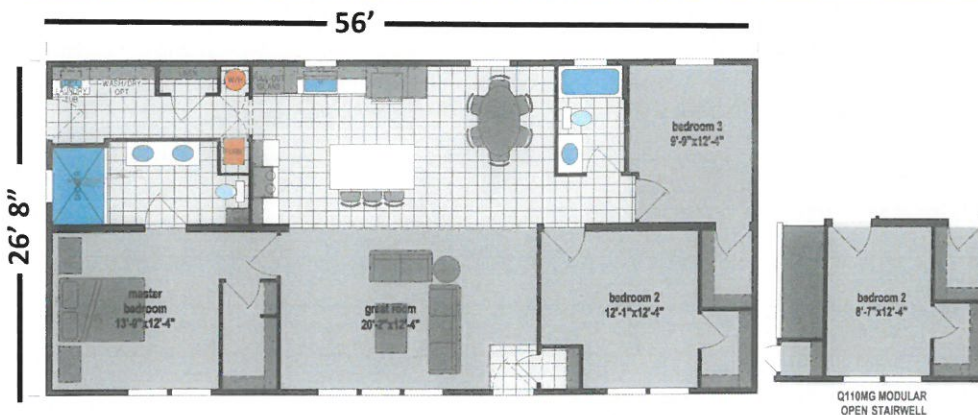


"Z" SKYLINER II-56'

Q110 - 1,494 SQ FT—3 BED 2 BATH



Standard Features

- 6" Walls and Northern Insulation
- 8' Sidewalls—16" O.C.
- OSB Sheathing with House Wrap
- Gridded Thermopane "Low E" Windows
- Maintenance Free Vinyl Siding
- Craftsman 6-Lite Insulated Fiberglass Front Door
- Craftsman Insulated Rear Door

- Dead Bolt Locks
- Ceramic Backsplash—Kitchen & Baths
- Floor Coverings & Window Treatments
- 30 Year Arch Shingles with Ice Guard
- 200 Amp Service
- KITTOPIA Kitchen
- 25 C.F. Side by Side Refrigerator

- 30" Glass Top Stainless Steel Range
- Stainless Steel Dishwasher
- Stainless Steel Euro Rangehood & Farmers Sink
- Fiberglass Tub & Shower
- Single Lever Faucets
- China Bath Sinks
- Exterior Faucets & Outlets
- C.O. & Smoke Detectors

Recommended Features

- Laundry Sink
- Cabinet over Washer/Dryer
- 51" Medicine Cabinet in Main Bath
- Medicine Cabinet in Hall Bath
- 18" Overhangs
- Gridded Patio Door
- Optional Kitchen with Sink in Island

Additional Features Shown

- Upgrade Siding
- Double Dormer
- Skyline Exterior Package
- Fireplace with Entertainment Shelves
- 2-Linen Cabinets in Master Bath
- Walk-in Duma Wall Shower
- Full Wall Subway Tile in Kitchen



Built by Skyline
Lancaster, WI

